

Product Highlight series

Redesigning Aged Care



CAREVISION TV



TABLET



SMART
SPEAKERS

CAREVISION N

True hotel and concierge style
experiences for Retirement Living
and Aged Care!

The Ripples of IoT in Construction

IoT in Construction involves the gathering and analysis of data throughout a project's life cycle from planning, designing, financing, and constructing, to operations and maintenance of a building.

The Internet of Things (IoT) is not like any other ambiguous technology buzzwords. Since its early beginnings in 1999 as a way to promote RFID, IoT has changed our lives for the better. Data collection is possible by embedding chips, sensors, actuators and other data collection technology into physical things.

Various industries have leveraged the IoT technology by recognizing patterns and trends. These sectors include the healthcare, manufacturing, automotive, transportation and energy industries. Recently, building and construction innovators integrated IoT to their processes and saw exceptional results in productivity, budget management, logistics and safety.

Reduce Accidents at Job sites

Injuries, accidents and illnesses contribute \$1.25 trillion to our global economy. Using IoT changes the behaviour and work standards which in turn reduces 20% - 40% in compensation costs. In 2016, International engineering firm Laing O'Rourke along with MOQDigital developed smart safety helmets that warn



the wearer and site managers of an imminent heat stroke.

Monitor Utilities

The Australian building and construction industry consumes 20% of the country's total energy expenditure.

Smart Inventory Tracking

Having insufficient materials on site stems from poor planning and forecasting. Tagging supplies with RFID tags, barcodes or QR codes, an inventory system can keep track if your storehouse is running low, and sends signals to purchasing staff to order more. Keeping track of

supplies minimises downtime, ensures on-time project turnover and reduces stress for everyone involved.

In 2020, the number of installed IoT connected devices worldwide is projected to rise to 30.73 billion. From mobile phones, smart watches, smart home devices, to security sensors, using IoT is the right step towards the future of Australia's building and construction industry.

**DESIGN
BUILD**

Subscribe to our Newsletter

Spec-Net is your chance to:

- Meet thousands of buyers & specifiers.
- Launch new products.
- Generate new clients & sales.
- Identify new Agents & Distributors.
- Conduct market research.
- Promote your Company within the Industry.
- Distribute information about your products & services.

Spec-Net News Lounge is sent each week to 10,000 architects, designers, builders, developers, engineers, merchants and key decision makers, all wishing to discover the latest building products, materials and equipment.

Scan the QR code on your table or mobile to Subscribe!



CONTRIBUTE

Product Highlight Series is proudly brought to you by your team at Spec-Net Pty Ltd. If you are a current building index subscriber, and have a product announcement you'd like to be considered for publication in an upcoming edition, or if you are interested in Spec-Net's indexing services, please contact us. **Please note:** submitted articles may be edited for reasons of space or clarity.

Product Highlight Series is published quarterly by Spec-Net Pty Ltd (ACN 003 773 564) (ABN 91 003 773 564).

SPEC-NET
Building Index

Phone: **1300 656 126** · Fax: 1300 656 127
sales@spec-net.com.au · www.spec-net.com.au
P.O. Box 665, Mittagong NSW 2575

©2017. All material both written and photographic within this publication is copyright to the publishers, Spec-Net Pty Ltd. Reproduction in any form is not permitted without prior express and written permission by Spec-Net Pty Ltd. The publisher does not accept responsibility for the quality of any media contributed from an outside source.

Smart Home Technology

for the Retirement Living Community of the Future

Architecture and design for the aged care and retirement living is in a period of transformation. Moving from traditional hospital care model to an improved hybrid model that focuses on efficient care, lifestyle and quality of life. If you are interested in designing buildings and spaces for the growing aged care and retirement living market follow CareVision on spec net, for your weekly aged care and retirement living design advice.

SMART HOME TECHNOLOGY MAKE LIFE SAFER AND EASIER

There is no doubt that there are far-reaching benefits of incorporating smart home technology in aged care and retirement living spaces, not least providing older people with a safety blanket and assurance that help is available at the touch of a button, or by simply asking your bedside lamp. Imagine the level of accessibility that smart home technology offers people with limited mobility, such as asking CareVision to turn the lights on when going to the bathroom at night reducing the risk of falling, or being able to see who is at the front door on their CareVision TV and unlocking the door for them to enter without having to rush to the front door, or calling out for a carer's help if they do not feel well and cannot reach the nurse call button.

BLENDING SMART AND FUNCTIONAL DESIGN

In the brave new world of IoT, and the smart home, aged care and retirement providers should embrace the freedom, efficiency and accessibility that smart home technologies can provide, but they must make sure it is incorporated into or alongside familiar design and interfaces. Many architects and designers in the aged care sector fail to recognize the long standing research that shows as people age, the first things they forget are the most recently learnt. When designing smart spaces, it would be wise to still incorporate traditional and familiar interfaces for people that's memories are failing, such as the common switch. Yes, the wall switch and the humble button are interfaces, and will remain one of the simplest most commonly recognized interfaces for generations of aged care.

SMART HOME TECHNOLOGY COMMUNICATION & ENGAGEMENT

Smart TVs are also changing the landscape of Aged Care and Retirement living, as they become smarter, they are able to act as a communication portal, or window for residents of aged care to the world! Think about the traditional care facilities, where people pay huge sums of money to enter care, and are cut off because there isn't even a phone in their room. Families have reported spending hours on end just trying to get through to their loved one, calling the switch, being transferred to a nurse station and waiting for ages before the phone rings out. With the CareVision smart TV, residents and their families have never been more connected with simple ways to communicate, have a video call, or receive photos and video messages from their loved ones. The CareVision smart TV is the most aged care friendly, as it is as simple as turning the TV ON, and can be personalised to the individuals needs, such as color schemes for color blindness, font size and content preferences.

SMART HOME TECHNOLOGY COMMUNICATION & ENGAGEMENT

When incorporating smart technology into an aged care or retirement village, it is important to consider how this technology will cope with scale and volume of people within a space. Consider for example if you will need voice recognition to determine if a person asking a smart speaker a question has authority to do so, such as ordering services. If the grandkids come to visit and order up on the room service menu, how should this be handled? Additionally, how will you manage the devices, having someone go around pairing devices to mobiles or not being able to manage the devices in a central place would be a nightmare in a large facility.

The CareVision platform allows you to register devices and manage them remotely, making it possible for care organisations to offer smart technology and smart home spaces at scale.

CAREVISION

Phone 1300 324 070
hello@carevision.com
www.carevision.com.au



Hassle Free Hotel Room TV & IPTV

HotelVision

Phone 1300 324 070
hello@hotelsvision.com
www.hotelsvision.com

A wide range of features catering to all accommodation types, in a simple, no set-top box required, cloud solution, allowing you to increase service revenue, and enhance the guest experience, without the hassle of ongoing contracts, clumsy and expensive VOD systems, or set top boxes and all their issues.

HotelVision offers superior, modern guestroom experiences for all accommodation types, from hotels through to student accommodation and mining camps. Make your guests feel welcome, keep them informed, embrace b.y.o content, reduce operational issues and expense of set top boxes and cable, all while increasing guest engagement with your services and offers.



Embrace BYO Content
Room Service Menus
Simple, Effective, Modern
In room and mobile messaging
Manage social groups and ticketing
Schedule reminders and promotions
Tailor Guest Experience to Their Profile
No Expensive Server Costs Necessary

Safe Security Vision Intelligence



Phone 03 9558 8455
sales@csmerchants.com.au
www.csmerchants.com.au

IndigoVision's Security Management Solution, Control Center has long been regarded as the best offering in the security industry. From its bulletproof nature to exceptional search and review forensic features; the software is intuitive and easy to use. The release of v15.2 is no exception, with the introduction of Dynamic Profile Switching and improved support for analytics; both of which enable Control Center to grow with your business.

IndigoVision reports the appointment of Consolidated Security Merchants as a new national distributor for IndigoVision's complete range of end-to-end enterprise IP video products.

CSM's IndigoVision range includes, but is not limited to, IndigoVision Control Centre VMS, CyberVigilant, artificial intelligence and complete range of IP cameras inclusive of body worn and intrinsically safe range of specialized cameras



Sofihub

Tiny hidden sensors that detect movement and monitor a person's daily routine may soon be able to help people with traumatic brain injury live more independently.

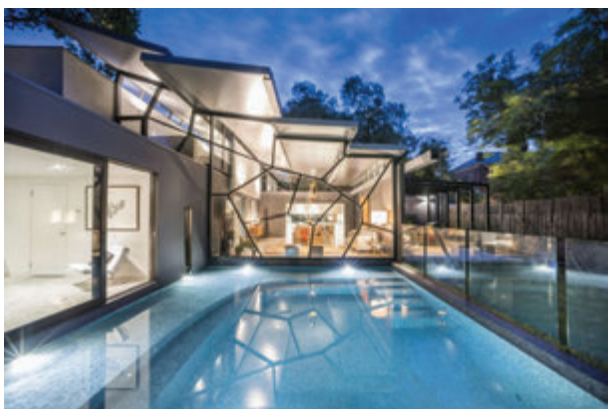
SofiHub can spot anomalies in the routine that affect the person's health and deliver customised audio reminders about medication and daily activities..

"Smart home technology is achieving greater adoption due to wider availability and lower costs.

However, sofiHub goes beyond other systems in the market because it learns and adapts to the user's behaviour and can be customised to meet their needs." Professor Ken Mouzakis.



Sound Waves of Artificial Intelligence



Structural & Insulated Roof

Versiclad
STRUCTURAL INSULATED PANELS

For an architectural look that has an incredible trafficable free span of up to 9 metres, choose Versiclad's Double Corrolink-S Structural Insulated Roof Panels.

Suitable for a variety of uses from complete homes, outdoor living rooms, verandahs and even football stadiums. Double Corrolink-S creates a beautiful feature with it's corrugated profile on both top and ceiling faces and is available in 11 colours and 4 thickness options, so you can achieve the look, span and insulation levels you desire. BAL 29 engineering certificate available upon request.

The solution is ideal for situations where roof pitch may be limited, catering to roof pitch of as low as 3 degrees. There are fewer unsightly support beams with long trafficable unsupported spans of up to 9.0 m. It is also suitable for fire prone areas with BAL 29 for AS3959 availbale, and the fire retardant EPS insulated core dramatically reducing radiant heat transfer, mould and condensation. Wiring services run through core duct and easy to install LED downlights and ceiling fan mounting plates available.

☎ Phone 1300 000 900
✉ sales@versiclad.com.au
🌐 www.versiclad.com.au

Vitrabond Shines at Bunjil Place



Bunjil Place entertainment precinct was recently launched in Melbourne's south-east city of Casey. The \$125 million, state-of-the-art building features 2200m² of Fairview's Vitrabond FR and Vitracore G2 aluminium composite cladding.

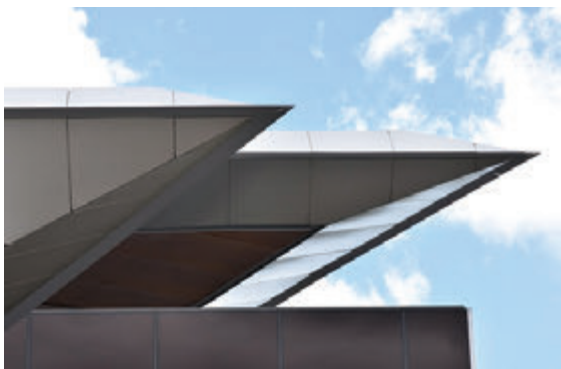
The striking 24,500m² building is one of the largest projects undertaken by local government in Australia. Designed by

Francis-Jones Morehen Thorp architects and constructed by Brookfield Multiplex, Bunjil Place is a national first with the innovative design incorporating 10 functional spaces. Including an 800-seat theatre, a 350-seat versatile function centre, plus a community library and art gallery.

The vision for the centre's expected 1 million visitors per year, was "to create an inviting central heart for the community that celebrates participation, belonging and civic pride." The Vitrabond FR and Vitracore G2 cladding panels in "Brushed Silver" shimmer over the curved glass façade and winged roof providing visitors with an insta-perfect sight. Further information on the project can be found in Fairview's Project News.

Vitracore G2 is currently the only aluminium composite panel available in Australia that is correctly tested as having satisfied the requirements of the following industry standards: AS 1530.1 and AS 1503.3 as well as full scale façade testing; BS8414 and BRE 135. AS5113 (excluding the debris requirements).

☎ Phone 02 6352 2355
✉ sales@fv.com.au
🌐 www.fv.com.au



Harvesting the Health Benefits from Gardening In Aged Care



The Garsy® Greenwall system is a simple, easy to install vertical garden system which provides a traditional 'dig in' gardening experience in commercial areas that are 'space poor'. Plants grow in their natural vertical plane. No pots. No liners or hydroponic systems are required. The Greenwall can be completely covered with vegetation on one, two, three or four sides. The units can also be free standing or used as a 'living' wall hedge or screen.

The Garsy® vertical garden is a portable, freestanding tower which is plantable on all sides. The vertical gardens bring a stunning aesthetic feature to open public spaces and corporate premises. Plants grow in their natural vertical plane. No pots. No liners or hydroponic systems are required. A flat backed version is also available for installation against a wall or entrance. Assembly takes less than two hours using gloves, a spanner and a spirit level. No hydroponic systems are required. No excavation or disturbance of underground services is needed. The system can be installed over open, level ground or on top of hard surfaces. For installation in public open spaces, all units can be bolted down through the base if required. Castors can be attached under the base of units for rotation if needed.

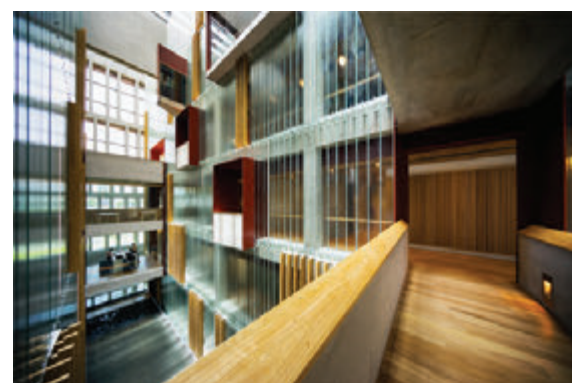
At 'The Gables' Aged Care Village in Camberwell Victoria, with the help of a clever maintenance man the residents have split a tall tower into two, one for flowers and one for veggies and herbs. Add a bit of faux turf and a lush, green, relaxing space for residents has been created in what was previously a grey, paved courtyard. The chef's happy too, with fresh produce now on tap and hopefully 'home grown' pumpkin soup on the menu soon.



☎ Phone 03 9822 2748
✉ sales@khdlandscapesolutions.com.au
🌐 www.khdlandscapesolutions.com.au

Green Star Rated Clear Surface Sealer & Topcoat

☎ Phone 02 9795 3700
✉ information@mirotone.com
🌐 www.mirotone.com.au



The Australian Embassy building in Bangkok is an intersection between two cultures - modern Australia and modern Thailand. Architects BVN have captured beautifully the cultural and diplomatic ties between the two countries. The new complex has a curved organic form, that has been inspired by the natural Australian landscape - while the colour of the building reflects the deserts of central Australia, and incorporates traditional Thai brickwork.

Many of the materials used within the embassy were Australian sourced including Australian timber Blackbutt, Spotted Gum and marble from the Pilbara region WA and North Queensland.

Mirotone Thailand provided the surface coatings for the interior of the embassy. MIROTEC WB 8022 Clear Sealer and MIROTEC WB 8060 Clear Topcoat (both Green Star Rated) were used to beautify and protect the Blackbutt and Spotted Gum timber throughout the interior of the embassy.



The Australian embassy is a perfect example of forward thinking incorporating environmental sustainability and design, while ensuring physical security requirements. The embassy became the most expensive project completed by the Australian Government overseas.

uPVC Double Glazed Windows



Wilkins Windows has specialised in the design, manufacture and distribution of unplasticised (uPVC) double glazed windows since the five star energy

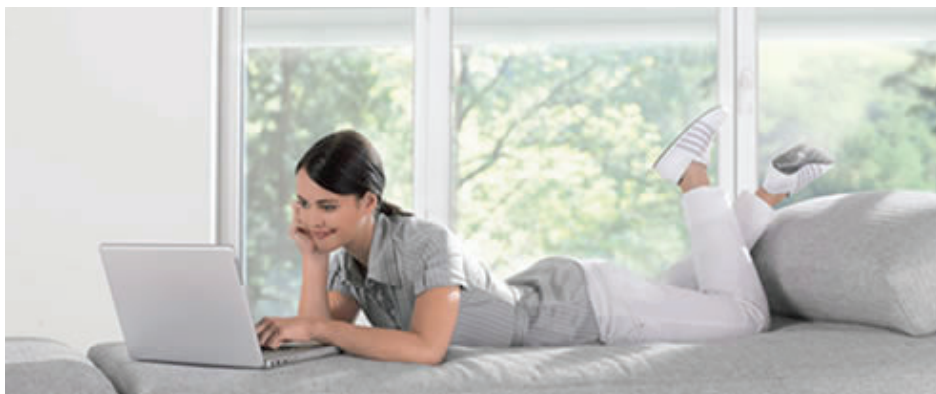
rating system was implemented in New South Wales. With a sharp eye on fluctuating industry trends, the family-owned company has ensured quality, innovation and sustainability in the expansion of their trusted catalogue. Hence, Wilkins Windows has won the trust of homeowners and design professionals alike.

The Foundations of uPVC Double Glazed Windows by Wilkins Windows

With a track record extending nearly two decades, Wilkins Windows has grown a diverse catalogue, along with an extensive portfolio of residential and commercial projects around the country. Here are some of the reasons why leading industry specifiers choose Wilkins Windows:

Window Security - Wilkins Windows builds uPVC double glazed windows using uPVC by Rehau, one of the leading innovators in polymer-based systems. Through a proprietary extrusion process, Rehau maximises the durability and dimensional stability of uPVC. Wilkins Windows harnesses these properties in the construction of windows that are guaranteed to protect against harsh external elements, as well as unwanted intruders.

Cost Against Value - Aside from durability, uPVC double glazed windows offers optimum insulation power. In action, the assemblies regulate indoor temperatures to lessen dependability on electrical heating and cooling systems. Hence, uPVC double glazed windows cut back drastically on energy costs, making for a truly sustainable product.



☎ Phone 02 9833 2993
✉ sales@wilkinswindows.com.au
🌐 www.wilkinswindows.com.au

Ripples 3D Wall Art Panels



The creative design behind this month's beautifully textured wall was by owner Paul Vanzella, Director of Vanzella Creative and co-founder of online art

website redbubble.com. The organic nature of the Ripples Pattern was used to full effect creating a stunning backdrop in Paul's garden and provided the perfect inspiration for a series of artistic photoshoots.

Inspired by Nature

The perennially popular Ripples 3D Wall Panels design is inspired by nature and adds significant depth to any sized garden as a feature wall for sculptural and artistic effect.

☎ Phone 02 9725 4222
✉ sales@3dwallpanels.com.au
🌐 www.3dwallpanels.com.au

Living Art

Paul's bold design for the wall included the addition of "living art" with a small succulent arrangement and a striking white stag.

"I am so happy with the product and the vision for the product. It looks amazing LIVE too... I am just so happy with it all," Paul Vanzella, owner.



Deco Granite Pathway

All StoneSet products are porous so can be used to create a hardwearing surface suitable for vehicular traffic but also one which allows water to pass through.



Deco granite was the perfect visual finish for this wandering pathway with the amazing backdrop of the NSW South Coasts hinterland. However, for this luxurious property located high in the hills, the deco granite proved to be a maintenance nightmare, washing away in the rain and creating a hazard for its users.

The client selected a colour which would still meet the objective of a natural Australian stone, yet once bound in our high-quality polyurethane resin would no longer be affected by washout, solving the maintenance headache and creating a long-lasting beautiful pathway. You would want nothing less to complement those views!

☎ Phone 1300 392 155
✉ mail@stoneset.com.au
🌐 www.stoneset.com.au

Main Thoroughfares Artful Illumination



☎ Phone 03 8587 0400
✉ info.australia@we-ef.com
🌐 www.we-ef.com

Artful illumination of the main thoroughfares and night-time breakout areas provides intuitive links throughout the campus. The new event lawn and

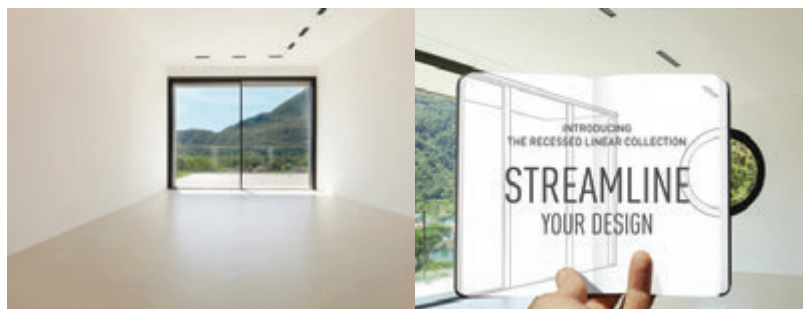
associated terrace is now the centre-piece of the campus. The slightly sunken lawn is a platform for organised events throughout the year, as well as a green respite from the busy road network. A central water spine, which is actually a storm water treatment and harvesting system, reflects the work done by Monash University on water-sensitive cities, while also recalling the original wetlands that occupied the area.



Australian LED technology company Brightgreen launches its new Recessed Linear Collection of LED downlights featuring the D400 Linear, the D900 Linear and the D2000 Linear.

Ideal for modern, minimalist interiors, each luminaire in the Collection features a low-glare lens and deep-recessed form that blends seamlessly into the ceiling. In addition to increasing visual comfort, its distinctive linear aesthetic is designed to visually integrate with the straight lines of modern architecture.

New Linear Recessed LED Downlights



An interchangeable lens system has been incorporated into the Collection, allowing designers to switch between a focused 10-degree beam and wider 40-degree beam for unparalleled precision and control of each luminaire's beam.

☎ Phone 1300 672 499
✉ sales@brightgreen.com
🌐 www.brightgreen.com

Commercial Wharf Decking

Remachined from Kiln Dried Australian Hardwoods from Sustainably Managed and Legal Forrests.



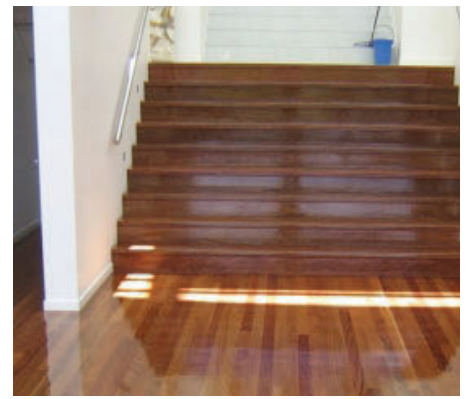
Species available, Blackbutt, Spotted Gum and mixed hardwoods (predominately blonde).

Blackbutt and Spotted Gum have a natural fire resistance. Their fire retarding properties make them suitable for use in many bushfire prone areas under Australian Standard AS3959.

The same timber species can be used for internal flooring and outdoor decking, to provide a seamless transition from inside to outside, expanding living areas or to create an outdoor room.

Australian hardwoods can easily be finished with a clear decking oil or stain. Alternatively the timber can be left to weather to turn an attractive silver grey. After timber has weathered it can be restored to its original colour by re-sanding and coating.

Phone 03 9808 5522
sales@hazelwoodhill.com.au
www.hazelwoodhill.com.au



SUITABLE USES:

- Screens
- Fences
- Gates
- Seating
- Decks
- Boardwalks
- Pedestrian and Light Vehicle Bridges
- Loading Docks
- Grandstands.

We have a team of highly experienced people with a vast knowledge of timber and building products who can assist you with your enquiry or order. Northcote-top-storey



Ladder Roof Hooks

Easily roll up the roof.
 Flip it over to secure.
 Climb up securely.



Universal Roof Hooks (URH) from Little Jumbo Ladders converts any single section ladder into a roof/ridge ladder in a matter of a few minutes. Simply clamps onto your

ladders top two rungs with U bolts and nuts provided. Comes with large yellow shatter proof wheels to make rolling the ladder up the roof to the ridge line effortless.

When the ladder is rotated, the large arc hooks with rubber bungs instantly grip onto the opposing tiles and stabilise the ladder providing a safe and stable work platform for you to work on. The Universal Roof Hooks suit all single section ladders, all roof pitches, and has a high maximum load capacity of 150kg.



ISO 90001 Accredited Manufacturer - lightweight alloy construction of 2.5kg - stay safe when working on your roof and get your ladder roof hooks today! Please visit our website, call us, or drop in to see us and discuss your needs.

Phone 03 9587 1964
leo@littlejumboladders.com.au
www.littlejumboladders.com.au

Integrated Electric Heat Tracing



Bellis Australia, one of the longest running industrial service contractors, is no stranger to integrating turnkey solutions for electric heat tracing in high risk applications. With over three decades of involvement in the LNG and petrochemical industries, Bellis Australia is able to provide clients with a deeper understanding of the work processes, requirements and specifications.

Bellis Australia has partnered with international industry leader, Eltherm, to provide enhanced quality services and outstanding technical innovation for integrated electric heat tracing applications. Aside from the LNG and petrochemical industries, electric heat tracing systems are also suitable for the other chemical processing, power generation, and concentrated solar power.



☎ Phone 1300 740 564
✉ sales@bellis.com.au
🌐 www.bellis.com.au

Slip Resistant Safety Flooring



Altro Aquarius safety flooring provides optimum slip resistance in wet and dry environments. It is suitable for bare feet and any type of shoe. With 16 vibrant colours, it is suitable for healthcare facilities or apartment style living where noise reduction will improve the wellbeing of users.

The Altro Aquarius colour palette has been carefully developed with consultation of Dementia experts to deliver innumerable contemporary or traditional design schemes; affording homely, soft and healing colours in chipped and non-chipped options.

No longer do you have to choose between studded or standard safety flooring. With Altro Aquarius you can have it all. Good looks and comfort, without compromising on safety.

☎ Phone 1800 673 441
✉ info@asf.com.au
🌐 www.asf.com.au

Ecobust Expansive Agent



One of the project teams on the show came to a grinding halt when their digger hit a boulder they named King Kong. They had no permit or licence to blast and their machinery didn't have the capability to remove or break the boulder, so things looked impossible for the crew.

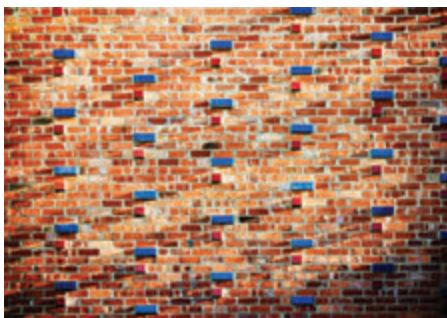
Luckily one of the team had a couple of cartons of Ecobust with him. The team simply drilled the holes, poured the mixture into the holes and left the product to do the work for them overnight. The next morning they were amazed at the result.



☎ 07 5576 4922
✉ brian@neoferma.com
🌐 www.neoferma.com

Vibrant Coloured Glazed Bricks

Recycled and contrasting glazed bricks introduce light, shadow and unique character.

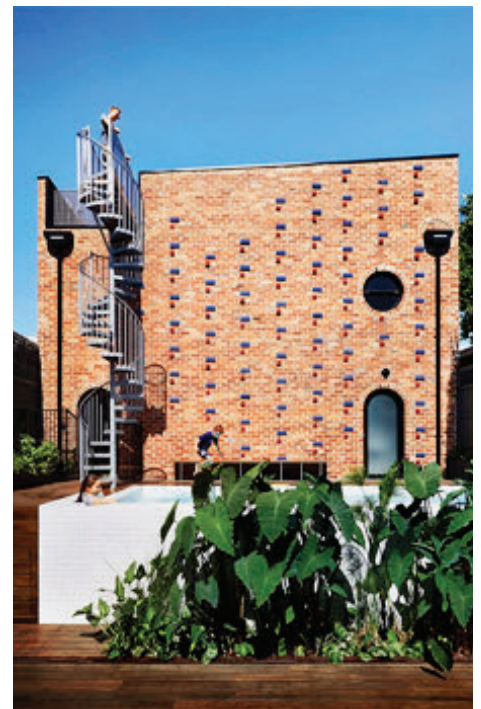


PGH BRICKS & PAVERS

Brickface is a compact building situated at the rear of an existing house in Richmond, Melbourne, reimagined into a home fit for all. It consists of a garage at ground level, a studio/guest bedroom on the first floor, and a roof deck (which doubles as a productive garden space). The main living area in the existing house faces south and opens up onto the new terrace and pool, where the view is to the rising high wall of Brickface.

Brickface is constructed of recycled red brick, interspersed with contrasting red and blue glazed bricks from the PGH Vibrant range to introduce light and shadow, pattern and colour. The building's round windows and the sculptural form of the parapet combine with the character of the recycled brick to soften the solid block. The structure sits hard up to a laneway on two sides, in a corner position.

The building terminates a row of garage doors and newer outbuildings that appear to tumble down the hill. It is a solid and secure bookend, presenting a character that looks as if it existed well before the other buildings along the lane.



Phone 13 15 79

NSWcustomerservice@pghbricks.com.au

www.pghbricks.com.au

Exterior Wall Rendering

JPS Coatings Deluxe Package for Exterior Wall Rendering



JPS Coatings has certified credentials in exterior wall rendering applications in Australia. The Victorian-based company has been in service to the

building and construction industry since 1988. Top industry professionals refer to the comprehensive JPS Coatings catalogue for all their solid plastering and rendering needs.

JPS Coatings offers both dry mix renders and polymer renders. PolyBoard Render is one of the best-selling products for its excellent adhesion to such low absorbency substrates as expanded polystyrene (EPS), pre-coated polystyrene sheet, off-form concrete and smooth masonry.



JPS Coatings HP Membrane can be used to decorate, restore and protect exterior and interior walls, beams, columns and balustrades with porous surfaces, such as concrete, F.C. sheeting, render and brickwork.

Phone 03 9357 6644

info@jpscoatings.com.au

www.jpscoatings.com.au

Architectural *Feature* *Fabrication*



Bringing all your designs to life, whatever they may be. From monumental, spectacular, exciting, to passive, and contemplative, architectural features

can stimulate or calm. Di Emme produces imaginative and expressive water features to complement architectural and design projects. Our artists and technicians creatively manipulate water within sculptural forms, explore textures and materials, and incorporate specialised lighting with the latest hydraulic technology to realise your creative visions.

Drawing on 30 years' experience, we also specialise in designing, manufacturing and installing small, medium and large scale custom architectural artworks. Working with architects, designers and builders, we have created a variety of designs that fall outside the usual architectural requests.

From water features and fashion feature windows to custom Willy Wonka inspired conveyer belts, we will breathe life into your dream projects. For more information, visit www.diemme.com.au.



This custom Wonka-esque conveyor belt installation is crafted from brightly painted plywood and fibreglass for Adriano Zumbo at The Star.

Phone 02 9550 0811
sales@diemme.com.au
www.diemme.com.au

Custom *Escalator Cladding*

Art in review: Looking Up
by Jade Oakley



When Westfield commissioned Australian artist Jade Oakley to produce ambient art pieces for their central escalator cladding and a multi storey lift well at Westfield Parramatta

she was instantly inspired by the indigenous plants of the area.

"I was amazed to find Lake Parramatta, tucked in behind a busy road, with some really beautiful original forest around it, including towering gum trees and mossy glades with trickling streams and tree ferns. I spent a day there sketching and photographing and thinking. Looking up is an artwork that sprang from this encounter with a surprising pocket of nature in a busy part of Sydney."

'Looking up' is installed over the body of



four escalators located in the centre court of Westfield Parramatta. Created using a white on white palette, this artwork is intricate and elegant all at once. Viewers can study the artwork while walking through the centre court and riding the escalators to the levels above.

The cladding is made from Alucobond treated in a custom shimmering white 2pak.

See more photos of the project, including production and process shots by visiting the project page on our art website.

Phone 02 9666 1207
info@axolotl.com.au
www.axolotl.com.au

Revit Handrail Railings File

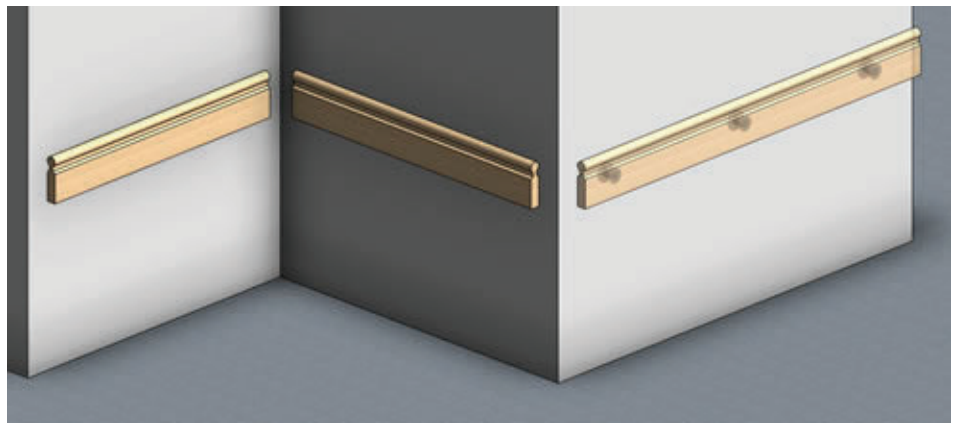
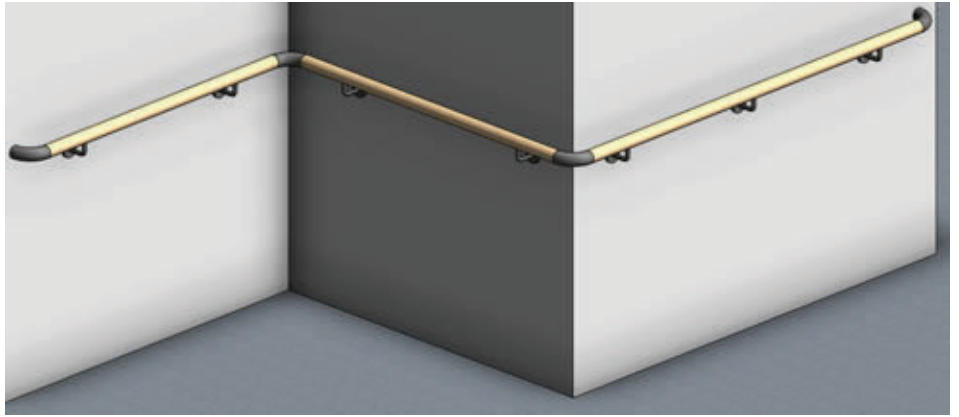
INTRIM®

Intrim have created Railing Revit files for our ConnectaRail, Hospital Handrail and Wall Protection to make drawing and specifying these systems easier.

Each particular railing type has recommended clearances & heights to take the guess work out of their application for compliance.

No more wasted time trying to draw in complex Railings - we have done the hard work for you.

☎ Phone 1800 622 081
✉ sales@intrimgroup.com.au
🌐 www.intrimmouldings.com.au



Durable Waterproof Timber-Look Flooring

EMBELTON

The latest Hybrid Flooring range by Embelton; Resilience is taking the flooring industry by storm. As the popularity of Hybrid flooring continues to grow in both residential and

commercial projects, Resilience is taking the category to a new level.

Resilience is a 100% waterproof floor comprising a multi-layer rigid core board construction, allowing a larger area to be laid without the need for expansion trims. Resilience has the added benefit of helping to hide imperfections often found in subfloors.

Manufactured with a high quality 1.5mm acoustic foam underlay, Resilience is efficient to lay, and meets all the necessary noise requirements for multi-residential and commercial installations. Developed to be



hardwearing while still providing the warmth and comfort of a timber looking floor, Resilience can handle the usual rigours of a busy family home from entertaining friends and family to fun loving children and the games they play.

With a 0.5mm wear layer, Resilience is equally at home in the commercial environment where

high levels of foot traffic are a daily occurrence.

Durable, waterproof and available in 8 classic Australian Timber and European Oak colours.

☎ Phone 1800 339 638
✉ gpevic@embelton.com
🌐 www.embelton.com

2018 Autumn *Paint* Colour Trends



Derived from the Kinship palette in the Dulux Colour Trends 2018, this trend features a collection of rich hues inspired by traditional cultures and folklore. It features warm

terracotta, russet, soft grey-greens, cosy neutrals and a pop of red that hint at an Eastern influence.

Cosy up your home with Autumnal hues.

This autumn, sophisticated earthy shades partnered with light neutrals will dominate alongside tribal-inspired textured furnishings - perfect for creating a cocooning and nurturing space that home enthusiasts crave for this season.

Whether you choose to go all-out with these deeper shades or just add a few touches here and there, the key is to pair them with a complementary white or neutral that boasts similar undertones.

Create the perfect cocooning and nurturing space for the season.

Dulux Natural White™ is a warm white that sits beautifully alongside the pinkish and heathery hues of Maiko and Beige Artefacts.

Paint is such an easy and affordable way to keep your interiors up-to-date, and pushing yourself out of your comfort zone colour-wise can be incredibly fun and rewarding.

☎ Phone 03 9263 5678
✉ dulux.customer.service@dulux.com.au
🌐 www.dulux.com.au



Designer Outdoor Chairs



Light and airy, the NODI chair's form and silhouette are characterised by twisted-interlaced rope stretched across a precise geometric frame. Refined proportions and a

minimalist approach lend a casual, lightness to the collection. The slim profile of the arm is angled slightly inward in a welcoming gesture.

Open-woven manufactured hemp (Canax®) - proprietary to Tribù - provides shape and structure to the seat and back. Bands are knotted together where vertical and horizontal lines intersect. Strong and durable, the rope work is also gently forgiving, adding to the comfort of each chair.

☎ Phone 03 9281 1999
✉ melbourne@coshliving.com
🌐 www.coshliving.com.au



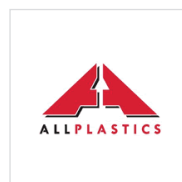
Gold Mirror *Panels*

Gold Signbond™ Aluminium Composite Panels were supplied by Allplastics for the ceiling panels at the Manly Vale Hotel renovation on the northern beaches of Sydney.

Expertly installed by the EM Cabinet Making team the gold reflective surface achieved the desired effect by the designers.

Signbond™ Aluminium Composite Panels

come with a high gloss surface on one side and matt finish on the other. This will allow it to be screen printed, spray painted or for the application of vinyl graphics.



☎ Phone 02 8038 2000
✉ sales@allplastics.com.au
🌐 www.allplastics.com.au

Luxury Commercial Flooring



The wood collection features an array of timber designs, offering a mix of tones, subtlety, size and variation, showcasing the raw beauty of

natural materials. Go for warmth with Natural Brushed Oak or Wild Teak, or opt for more contrast with Dark Recycled Wood. Our wood-floor replicas are second to none.

Although wood is the classic choice when it comes to flooring, stone is next in line. Expona Commercial features a contemporary collection of natural mineral designs including clean and rustic stone effects, strong slate designs and raw industrial surfaces. Extensively researched and developed, swatches like Fossil Stone or Amazonian Slate offer a cool neutral palette which beautifully replicate the unpredictability of these natural materials.

As with all natural materials like wood and



stone, our products may contain knots and variations in markings as part of their design. Feel free to request a physical sample to get best acquainted with the product.

Expona is a symbol of quality, representing the pinnacle of modern manufacturing techniques coupled with cutting edge trends. And our floors are more than a piece of the

puzzle. They are the ideas on which entire concepts can be built. Where will you begin?

☎ Phone 1800 777 425
✉ sales@polyflor.com.au
🌐 www.polyflor.com.au

Maintain Sustainable Handmade Wooden Furniture



The maintenance of your furniture will vary, dependent upon the materials used to create and finish the product.

We will concentrate here on wooden furniture.

Keeping furniture clean from dust and wiping up spills immediately will ensure longevity, but in order to keep furniture looking it's best, it will need routine maintenance, which can be achieved through polishing with a wax, such as Livos Bivos Oil Wax #375 or Livos Liquid Beeswax #315.

The correct application of wax creates a hard-polished surface which will protect the wood and provide a smooth hard surface which makes regular cleaning and dusting easier, preventing dust from being imbedded, which can occur in unwaxed surfaces.

While there are a multitude of furniture polishes available, such as sprays and oily



polishes, these 'easy methods' can cause cumulative damage to furniture. The products can build up over time with numerous applications which trap and 'glue' airborne dirt to the surface. Of equal concern is the lack of disclosure of ingredients in most products, which can be harmful to our health and our furniture.

So when you go out to purchase your next



piece of furniture, be excited about choosing ethically made because you can be armed with the right products to maintain your furniture to ensure it lasts!

☎ Phone 03 9762 9181
✉ info@livos.com.au
🌐 www.livos.com.au

Putting Waste to Good Use



Neilsens, the largest independent supplier of premixed concrete and quarry products in south-east Queensland is working together with USQ to come up with viable alternatives. Once

commercial viability is proven, operations at Neilsens are set to progress to the large-scale production of geopolymers, delivering a huge environmental saving in addition to this, the potential to make a positive impact on society by addressing a global issue is huge.

The production of geopolymer uses reactive aluminosilicate materials and alkali-activation technology. Unlike Portland cement, geopolymer does not rely on limestone and clay, or require heating to around 1450 degrees Celsius for calcination, the process which drives out carbon dioxide.

Fly ash, the very fine particles generated from coal-combustion power stations, is one industrial waste that can be used in geopolymer production. Australia's heavy reliance on coal-fired power stations, instead of Nuclear energy, results in the production of 14 million tonnes of fly ash per year. Only a small amount of this waste is used, more than two-thirds is dumped as landfill and only 38% is recycled. Changing these industrial wastes to greener options has potential to cut CO2 emissions by up to 80%.

For more information please visit our website to watch a short Video:
www.neilsens.com.au/the-neilsen-group/sustainability

☎ Phone 1300 CONCRETE
✉ lisa@neilsens.com.au
🌐 www.neilsens.com.au



Polytec's newest innovation in laminates promises an unrivaled anti-fingerprint technology in the purest matt form.



Venette's advanced Matt technology creates a soft appeal, and invites you to explore the surface without

the danger of fingerprints and scuff marks. The lack of light reflection ensures your cupboards will stay consistent in colour, and remain pristine longer.

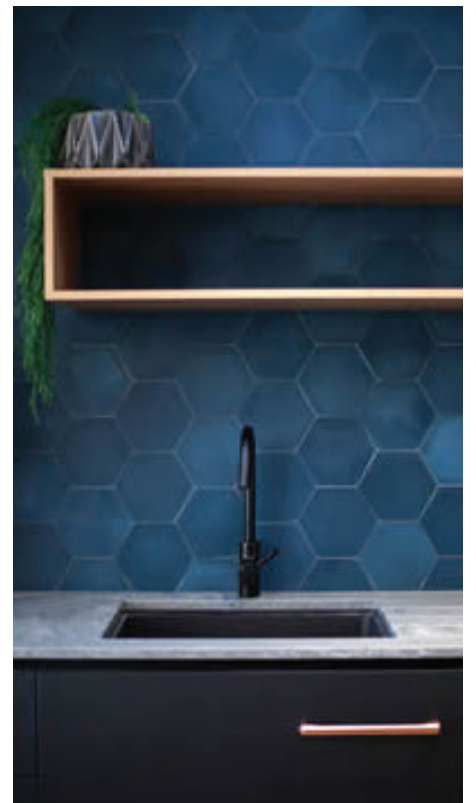
Matt Laminate Surfaces

Venette Meet Ava

S. Group's Meet AVA project utilized polytec's new Venette range in order to create a modern and stylish home, while maintaining a child-friendly space. The quaint 1890's cottage may look small, however, S. Group used the space to their advantage and displayed its full potential as a family home.

Black Venette is used on the kitchen joinery, contrasting with the grey cement benchtops and timber-look shelving, proving that black cabinetry is becoming an essential to new kitchens

☎ Phone 1300 300 547
✉ sales@polytec.com.au
🌐 www.polytec.com.au



Floor Heating Benefits

COLDBUSTER
floor heating

Comfort Nothing compares to floor heating, it simply creates the best ambiance of any heating choice!

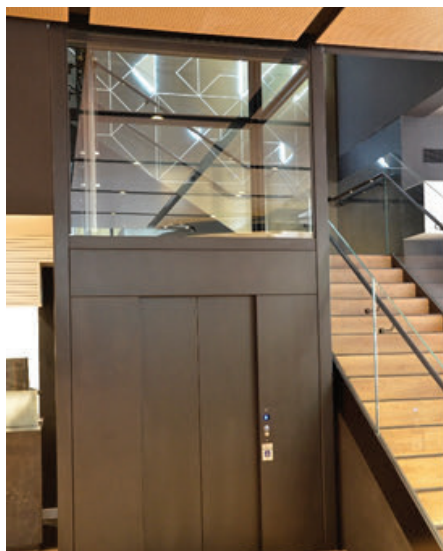
At floor level Where you want it, not from

high up on the wall or from the ceiling. Remember, heating rises.

Evenly distributed Radiant heating throughout the floor area, with no overly cold or hot spots. No gusts of hot air!

Cost effective Turn heat on only when needed, resulting in huge ongoing savings. And control heat independently per area.

Low capital cost Not only does Coldbuster floor heating cost far less to supply than other heating alternatives, but labour is minimal = quick installation!



RAISE
Lift Group

Raise Platform Lift were please to assist HSBC Premier with the lift solution for their new client centre at 333 George St Sydney,

Raise Platform Lift worked closely with the Architect, Designer, Builder, and the Steel fabricator to deliver a functional and astatically pleasing lift to meet their DDA requirements.

Ensure your clients get a free, no obligation quote for floor heating, before its too late and the flooring has been installed!

Speed Response time can be as low as 30 mins depending on floor heating type.

Programmable thermostats Regulate comfort levels whenever/however you like.

Maintenance free There are no moving parts or wear and tear. Coldbuster floor heaters require no maintenance.

Durable & reliable Stringent testing forms part of the manufacturing process for all Coldbuster products.

Long warranty All heaters have a 15-year warranty.

Safe Heaters are earthed & waterproofed, offering protection against fire and shock. No high voltage, hot surfaces or combustible gases.

Unobtrusive Nothing visible, nothing to store. No sound, no smell, nothing hot to touch. No outside venting required.

Allergy & environmentally friendly Our heaters emit no volatile organic compounds or nitrogen and do not produce smoke, fumes, dust or electromagnetic radiation.

Easy installation Heaters are sold as DIY kits, with easy to follow install guides and online videos. Of course, we can install for you too!



With Coldbuster, the heat rises naturally from the floor

☎ Phone 1800 85 75 65
✉ sales@coldbuster.com.au
🌐 www.coldbuster.com.au

Stainless Steel Basins



Proudly Australian
Made in our Melbourne factory, the Curveline is a popular choice for schools, sport stadiums and public amenities due to its durability and practical style.

With sleek curving lines and multiple integrated basins to suit, the Curveline can be customized for your convenience. Available with a variety of quality tap ware to suit any application.

☎ Phone 1300 764 744
✉ info@britex.com.au
🌐 www.britex.com.au

Raise Platform Lift

The lift services 2 levels and has a bespoke stunning fit out of Glass and Mat Black Metal Surfaces, the glass panels work well with the architectural lighting in the stair case area. The lift was designed and manufactured by one of Italy's premier lift companies, offering a very high level of finishes quality as well as superior mechanical reliability.

☎ Phone 1300 339 559
✉ raise@raiselift.com.au
🌐 www.raiseliftgroup.com.au

Bi-Folding Curved Door Project

Brio Project:
Tunnels Beaches



Brio's Weatherfold 4s folding hardware made an adventurous curved door project a reality for an innovative wedding venue in Devon, UK.

This commercial property, operated by Devon Beach Weddings, can cater for 160 guests and is set on the beautiful, coastal landscape of Tunnels Beaches (a network of hand carved tunnels leading to sheltered coves).

Standard bi-folding doors are locked top and bottom which requires reaching up and bending down to operate them. To reduce time and effort when opening up the venue to its breathtaking views, the project utilised Brio's new 286 Dual Point Lock which unlocks the top and bottom with a single action.

This hardware upgrade not only improves functionality but also aesthetics as doors use a reduced amount of visible hardware.



Weatherfold 4s was chosen for its resistance to corrosive environments as well as its smooth and easy operation.

☎ Phone 02 8718 6718
✉ brio.sales@allegion.com
🌐 www.brio.com.au



Glazed Rooftop Hatch Melbourne



The Gorter Hatches Glazed Hatch was recently used on a new three-story home on a leafy street in Hawthorn, Melbourne, to allow access to the rooftop terrace area.

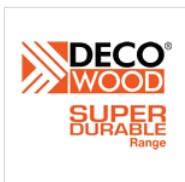
The Glazed Hatch allowed its brand-new owners to view the spectacular fireworks in the CBD during New Years' Eve 2018. The rooftop is also enjoyed by the owners' teenage sons, who utilise the newly-created space to relax with friends.

Gorter Hatches' Glazed Roof Hatch is built to withstand even the toughest weather conditions, and is commonly used for access to roof terraces, roof gardens and emergency escape routes, and is ideal for homes and office buildings with few windows, bringing natural light into any space.

The Glazed Roof Hatch is opened and closed with the push of a button, triple glazed to withstand even severe weather conditions, and like all our roof hatches, is a simple, practical, and cost-efficient alternative to vertical roof door construction.

☎ Phone 03 8648 6636
✉ sales@gorterhatches.com.au
🌐 www.gorterhatches.com.au

Timber-Looking Batten



Timber battens are undeniably one of the hottest architectural trends for 2018. A wide range of shapes and sizes are offering

endless design solutions, with long vertical or horizontal lines creating contemporary timber features. From facades and walls, to ceilings and even garage doors, the humble timber batten is turning heads across both

the residential and commercial sectors.

DecoBatten is finished with Super Durable DecoWood - a woodgrain photo image that is sublimated into Class 2 powder coating. The finish comes in 150 different timber grain finishes and is marine grade, UV resistant and will never peel or rub off. Better still, the finish will NEVER need painting or staining like real timber and is virtually maintenance free!

☎ Phone 02 9726 7726
✉ info@deco.net.au
🌐 www.decorativeimaging.com.au



SPEC-NET

Building NEWS



1300 656 126



List your website in the Spec-Net Building Index Portal. With the addition of a detailed company profile page and article submissions. A tool for Architects, Designers, Engineers, Developers, Builders, Contractors and Home Renovators, Spec-Net offers quick searching via keywords to websites, profiles and relevant news articles in the Australian Building Industry.

Website Listing

Linking of your Website by up to 80 Keywords into the Spec-Net Building Index Portal - 20,000 visits per day.

E-News Releases

News Articles/Press Releases all linking back to your website. Distributed in our weekly newsletter - 8,000 subscribers.

Google AdWords

Maximise your Google real estate with AdWords by Spec-Net. Combine your existing Internet Marketing Package with a tailor-made Google AdWords campaign to maximise your SEO potential. Spec-Net has offered building construction, and interior design online marketing for over two decades. We are proud to add Google AdWords reseller services to our repertoire.

Internet Marketing

List your website in the Spec-Net Building Index Portal. With the addition of a detailed company profile page and article submissions. A tool for Architects, Designers, Engineers, Developers, Builders, Contractors and Home Renovators, Spec-Net offers quick searching via keywords to websites, profiles and relevant news articles in the Australian Building Industry.

SUBSCRIBE TO OUR NEWSLETTER



Online Shop

www.shopspecnet.com.au

The Spec-Net Online Shop is a user-friendly, custom developed platform providing all the benefits of an e-commerce site without the cost. Listings are free with a minimal commission of 10% on sold items. So why spend thousands of dollars developing a shopping site when Spec-Net has developed one for you.

Website Design & Hosting Services

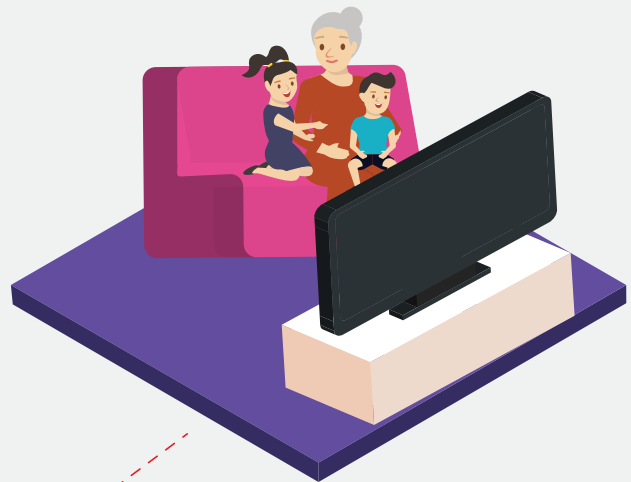
Spec-Net can transform your website to a WordPress platform, allowing you to make your own changes, be secure with https, rank higher on Google and most importantly, improve the look and functionality on mobile devices. We also offer domain management and website hosting through AWS.

Content Concierge

Let us take the stress out of creating engaging and consistent media content, that will attract more customers, followers and ultimately more sales. Constant content is the key to any online marketing strategy. We can craft and publish unique and engaging data-driven content for your company.

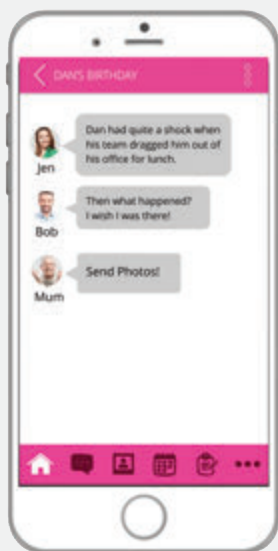
Smart Spaces

Traditionally Retirement Living providers have been able to run successful businesses without having to push the boundaries or go the extra mile. The future of retirement living will demand that providers re-imagine the retirement living experience to meet the demands of the incoming Baby Boomer clientele, or risk missing out on this affluent generation.



Connected Devices

CareVision's pioneering technology platform combines human assistive artificial intelligence, voice recognition, connected health devices and a powerful, secure cloud engine to support the care of our loved ones and empower them with the choice and control they deserve. Available across Smart TV, mobile, tablet, web, voice control and over 200 connected devices CareVision is truly accessible and user-friendly technology solution.



Empowered People

CareVision makes it easy for families to remain updated, for care recipients to make friends, and for your organisation to share news, photos and live stream social events. Ultimately allowing your retirement community to extend beyond the walls of the village.

