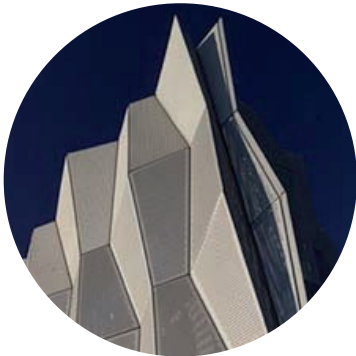




PRODUCT HIGHLIGHTS SERIES 09 | 15

**SPEC-NET**  
Building Index





### **Brightgreen's D700+ ultra low-glare LED downlight**

Designed to combat the occurrence of light spill, or glare, recent research proved that the D700+ creates more inviting environments with lower Unified Glare Ratings than standard downlights on the market. With a patented low-glare lens and a deep-recessed design that shields the light source from the viewer's direct line of sight, the D700+ projects an unimposing beam to silently champion interior architecture and design instead of dazzling viewers with unwanted light spill.

In addition to the low-energy LED technology that comes standard with all Brightgreen products, the D700+ is designed to cut heating and cooling energy usage. With an airtight gimbaling system and IC rating, the D700+ allows users to benefit from a fully insulated roof and sealed ceiling-stopping conditioned air from escaping, and improving overall home thermal efficiency.

[www.brightgreen.com/d700+](http://www.brightgreen.com/d700+)

**brightgreen™**



### **Universal Anodisers Interference Colour**

This very innovative

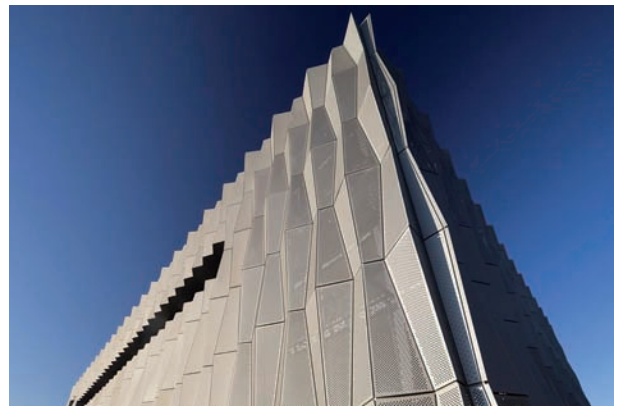
façade designed by Peter Elliott Architecture displays both embossed and perforated aluminium panels to the external walls of the building.

The Architect specified 'Gum Tip' and 'Silver Grey' from Universal Anodisers's 'interference colour' range.

Interference colour is created by pore modification. Unlike the two step process the colour becomes both reflective and refractive providing the illusion of colour variation, this is accentuated and enhanced by the angular placement of the façade panels, giving the façade a life of it's own.

Anodising being integral will provide this façade will longevity, low downstream maintenance and will not peel. The building will maintain it's metallic lustre unlike any other surface finish.

Universal Anodisers are proud to have been the preferred Anodiser for this project.



### **QuARTz by ACO**

QuARTz by ACO bathroom drainage solutions inspire creative and versatile bathroom planning. The selection of channels and floor wastes allow for the use or elimination of physical barriers within the bathroom floor. A diverse range of grates enable QuARTz by ACO products to be integrated into an extensive range of bathroom designs.

[www.quartzbyaco.com.au](http://www.quartzbyaco.com.au)

**QuARTZ** by ACO





## EzyTube Flat Pack

Ezytube Flat Pack is an innovative new formwork tube which is rapidly expanding in use to create round concrete columns on major construction projects.

Ezytube Flatpack is lightweight, easy to set up and remove, and occupies less than 5% of the volume that a round tube would occupy therefore transport costs to site are only a fraction of the cost compared to conventional round tubular column forms. Ezytube flatpack is manufactured as a round tubular form, has a thin, high tensile strength wall and upon manufacture is flattened to an overall thickness of approximately 15mm.

The flattened tubes are simply taken from the pallet, pushed roughly back into shape, placed over the steel reinforcing cage and held in place by regular formwork bracing to ensure that the form does not move during the pouring of the concrete. Ezytube Flatpack is rigid enough to be placed in a suitably plumb position, and yet flexible to revert to the original round shape under the weight of poured concrete.



## Achieve an R10, R11 or R12 Slip Resistance Rating with Polycure Slip Resistance Additives

Polycure is pleased to introduce its new range of Slip Resistance additives suitable for use in water based and solvent based coatings.

New slip resistance requirements became effective for stairs in May 2014 for some states. The Building Code of Australia (BCA) introduced 'Deemed to Satisfy' provisions to

determine the slip resistance of all treads and nosing of stairways in all building classes and for the pedestrian ramps and landings of Class 2-9 buildings. This includes domestic houses.

A minimum R10 rating is required if the stair tread surface is expected to remain dry, whilst an R11 rating is required if the surface is expected to be wet or become wet at times.

Polycure has tested a full range of coating systems to the Australian Standard AS/NZS 4586:2013 Slip Resistance classification of new pedestrian surface materials – Appendix D (Oil-Wet Ramp Slip Resistance) and is able to recommend both water based and solvent based coating systems to meet the requirements of the BCA.

For more information refer to the [www.polycure.com.au](http://www.polycure.com.au)



**MIROTONE**



## Copper Tone Knobs & Handles from Kethy Australia

Bring a warmth and richness to your interior finishes with Kethy's latest range of copper tones. Available in 6 styles. To see the full range of Copper Tone knobs and handles please visit: [www.kethy.com.au](http://www.kethy.com.au)

Kethy Australia has built on the design philosophy where we design, build and select products that satisfy our goal to provide "Designs That Enhance" - We believe that our products should enhance the look and function of the furniture to which they are attached.



## SymoniteHD aluminium composite panels

Sunshine railway station recently underwent a transformation. As part of the Victorian State Governments brief to increase security and safety, SymoniteHD Tropical Yellow was specified, delivering a high visibility area.

SymoniteHD's heavy duty phenolic core has superior durability and impact resistance able to withstand the high volumes of pedestrian traffic expended every day.

SymoniteHD is made locally and has excellent temperature stability, ensuring panel flatness over a wide temperature range preventing creep and telegraphic deformation, ideal for Australian weather conditions.

When used in conjunction with the Smartfix® system it is the only Australian Made and mechanically fixed aluminium facade fixing system approved for use in Cyclonic regions.



## Simply Roller

Simply Roller Blinds by Peter Meyer are designed to suit contemporary or classic decor with style and elegance.

Our Roller Blinds come with stainless steel chains as standard, ultrasonically sealed edges and a choice of base bar colours and shapes.

All our Simply Roller blinds can be motorised, linked and spring assisted and with our latest roller blind system, we can achieve the smallest fabric gaps in the market.

Create ambience in your home effortlessly with stylish shade solutions from Blinds by Peter Meyer. For over thirty years, our products, including the popular roller blinds have provided shade for thousands of windows in homes across Sydney, Melbourne, Brisbane, Perth, Gold Coast and throughout Australia. We offer a wide range of styles, colours, and fabrics to suit your style and budget.

With delivery to anywhere in Australia from our Sydney office and a 5 year warranty on all products, request a sample of our roller blinds and be impressed by the high quality we offer.

When it comes to adding value to your home, don't look past Blinds by Peter Meyer.

Find all this and more @  
[www.spec-net.com.au](http://www.spec-net.com.au)